



BEBOOK[®] E-READER
Includes Adobe Reader Mobile



USER GUIDE

Welcome...

To your BeBook electronic reader

- Clear, paperlike display for perfect readability, even in bright sunlight
- Light to carry, simple to use
- Read books and documents in all popular formats including pdf, epub, word, txt and html.
- Change typeface and typesize while reading
- One BeBook holds a whole bookcase
- SD card slot lets you exchange books and documents with friends
- Free software upgrades
- Over 20,000 free classic eBooks available for download at the **www.mybebook.com**
- Play MP3 tracks

Got everything?

- BeBook reader
- Leather case
- 1 x Li-ION rechargeable battery
- USB cable
- Earphones

Need more information?

Visit **www.mybebook.com**

Contents

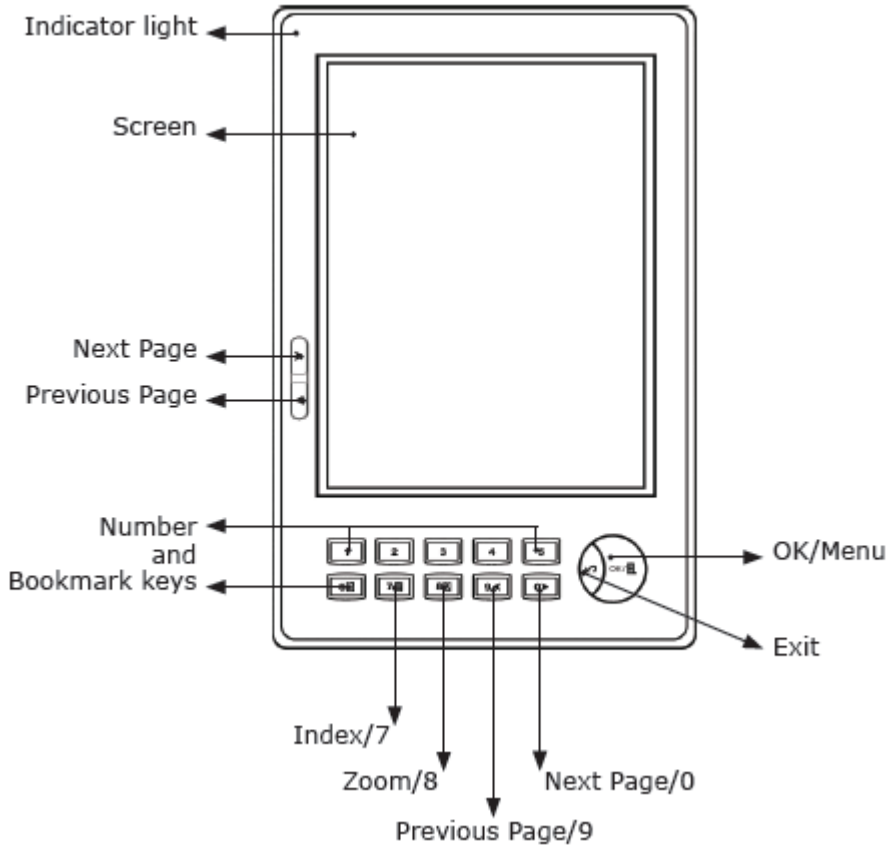
Your BeBook at a glance	6
Getting started	8
Install the battery	8
Charging the battery	8
Battery status	9
Switch on/off	10
Keypad lock.....	11
USB connection	11
Adding new eBooks	12
Adding ePub files with Adobe Digital Editions	12
Download Digital Editions	12
Import your eBooks in Digital Editions	13
Connect your BeBook with Digital Editions.....	13
Copy eBooks from and to your BeBook	13
Installing an SD card	14
Copying files to SD using Windows 2000, XP or Mac.....	14
Reading eBooks	15
Open an ebook	15
Page turning	15

First/Last page.....	16
Jump to a page.....	16
Zoom in and out	16
Bookmarks	17
Add a bookmark.....	17
Replace a bookmark	17
Delete a bookmark	17
View and go to bookmarks	17
Index.....	18
Search	19
Search for a book.....	19
Search by folder category	19
Search by order	19
Find a recently viewed ebook or document	20
Switch between your BeBook and SD card bookshelves	20
Delete ebooks and documents	21
ebook information	22
MP3 tracks	23
MP3 controls.....	23

Settings	24
Settings menu	24
Key tones on/off	24
Change language	24
Change font.....	24
System information	25
Help	25
Safety information	26
Cleaning	27
Product disposal instructions.....	27
Warranty.....	28
FAQ	29

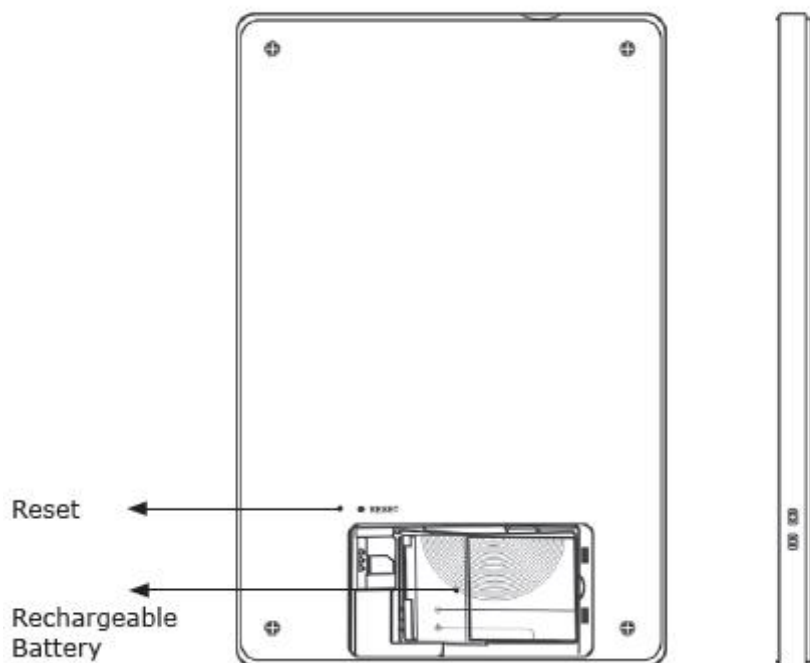
Your BeBook at a glance

Front



Back

Side View



Top View

Power On/Off
Keyboard Lock

SD Card slot



Bottom View

Headphone socket

USB port



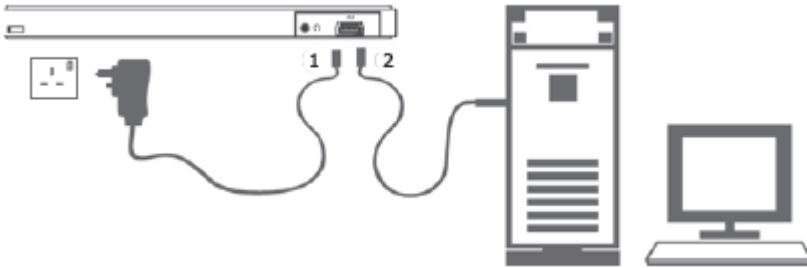
Getting started

1. Install the battery

Open the battery cover.

Install the battery as indicated on the battery slot.

2. Charge battery for at least 12 hours



- Plug the USB¹ cable into your PC or Mac and connect the other end to your BeBook.
- To charge the battery for the first time, please allow 12 hours continuous charging. Subsequently, it takes about three hours to fully charge the battery from flat.

Charging indicator light

- While charging the light flashes orange.
- When fully charged the light is green.

Your BeBook can be used while charging, but the charging takes longer.

One full charge lasts up to 7000 page turns or up to 5 hours of mp3 playback.

Important

Do not use a different type of battery or charger, this can cause damage to your BeBook.

Do not remove the battery when charging.

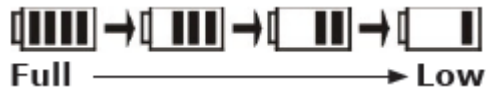
Note

Your BeBook can be also charged by a power adapter² (not supplied).

Connect the BeBook to the power adapter, and plug the power adapter into a mains power socket.

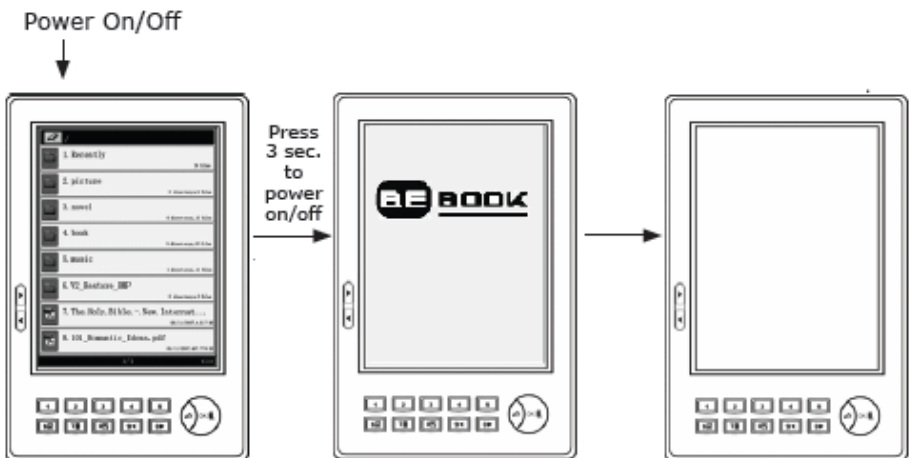
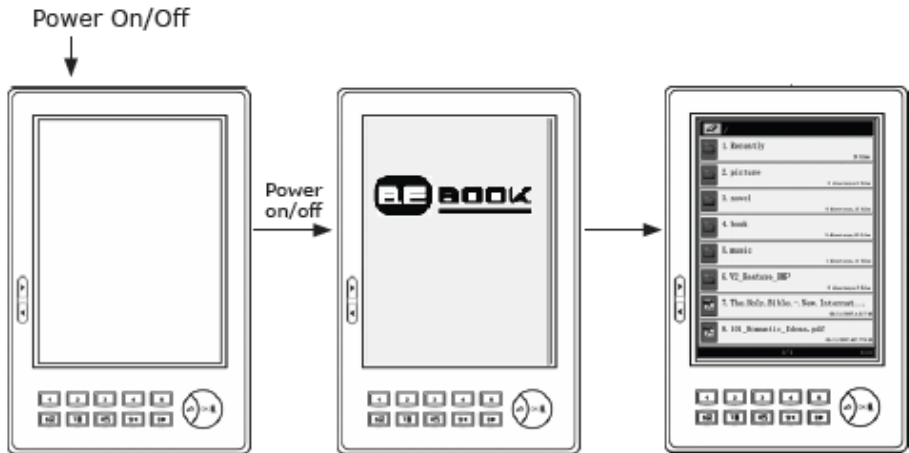
Battery status

The battery status icon is displayed at the bottom right corner of the screen. When only one power bar is displayed or you hear the low battery warning, charge the battery.



Switch On/Off

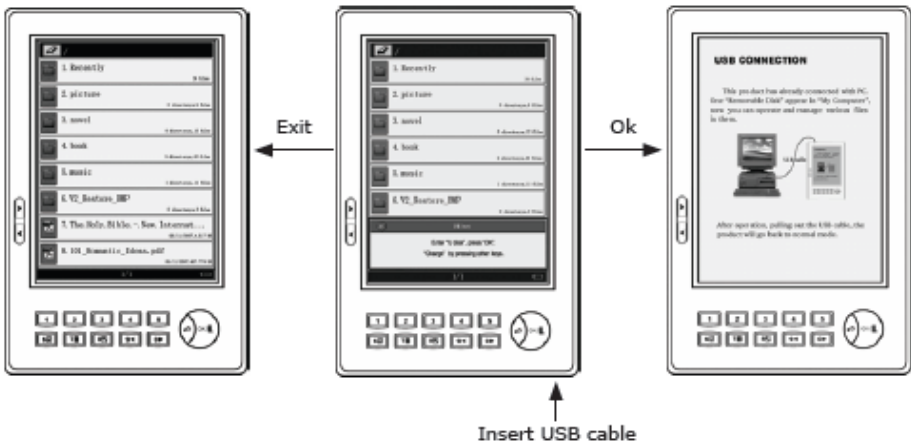
1. Press On/Off to power on. Your BeBook start up screen is displayed, then the bookshelf screen.
2. To switch off, press and hold the On/Off button for about 3 seconds.



Keypad lock

Prevents accidental presses of the keys/buttons.

1. Press the Power On/Off button briefly to lock or unlock the keypad. The display shows: Keyboard locked. Press power to unlock.



USB connection

You can connect your BeBook to your PC or Mac by USB cable supplied. Plug in the USB cable to your computer and BeBook and press OK to connect. When connected the My Computer window will display a Removable Disk icon.

Note

When the USB cable is connected, you will not be able to read books on your BeBook screen.

Adding new eBooks

eBooks can be obtained from a large number of websites. On **www.mybebook.com** you will find over 20,000 free books to download. More current titles can be bought through many online stores.

- 1. Visit www.mybebook.com**
- 2. Search for books in the 'eBooks menu'**
- 3. Save the books to your computer hard drive first**
- 4. To put the books on your BeBook, plug in the USB cable to your computer and BeBook and press OK to connect (If it doesn't connect, restart your computer and try again).**
- 5. Your BeBook is now recognised as an extra storage device on your computer. Drag and drop the book files there. (or use copy/paste)**

Adding ePub files with Adobe Digital Editions

In order to download the most recent titles in ePub format, you have to download Adobe Digital Editions®. This program will help you to order and synchronize your eBooks.

Download Adobe Digital Editions

- 1. Go to www.adobe.com/products/digitaleditions.**
- 2. Click on the START INSTALLATION button.**
- 3. Follow the Installation wizard.**

Import your eBooks in Digital Editions

- 1.** Click on LIBRARY In the menu.
- 2.** Click on add file to library.
- 3.** Browse on your computer for text files you like to synchronize with your BeBook.

Connect your BeBook with Digital Editions

- 1.** Connect your BeBook with your computer using the USB cable supplied.
- 2.** Your BeBook will be recognized by Digital Editions as a new bookshelf.

Note

The first time you connect your BeBook to Digital Editions the program will synchronize all data from the BeBook to your computer. It may seem that your computer is stuck, but this process can take up to 5~10 minutes. Remember, this is only the first time.

Copy books from and to your BeBook

When the BeBook Is connected and recognized by Adobe Digital Editions you can drag and drop files from one bookshelf to another.

For more details about Adobe Digital Editions please visit the Adobe website www.adobe.com.

Installing an SD card

- 1.** Insert the SD card in the direction of the arrow with the label facing up.
- 2.** The bookshelf screen will be displayed.

To remove the SD card, push it in until you hear a click.
You can now pull it out.

Copying files to SD card using Windows 2000, XP or Mac

Under the Windows operating system, files may be initially copied to the internal cache memory and need to be confirmed.

To confirm a copied file:

- 1.** During file transfer the indicator light flashes on your BeBook. Wait until it stops flashing.
- 2.** Right click the Removable Disk icon on your PC screen then select Eject or Pull out from the menu. You can now remove the USB cable from your BeBook.
- 3.** Your BeBook screen displays the bookshelf interface, and you can select and read the books stored on the SD card.

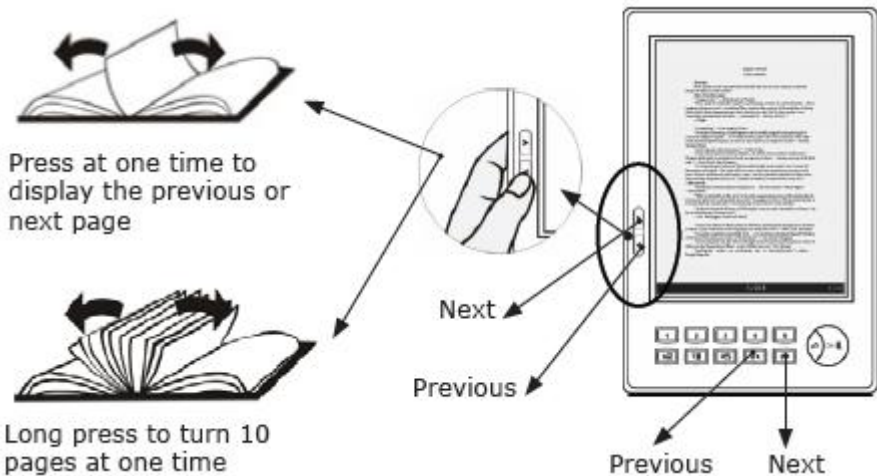
Reading eBooks

Open an ebook

1. When you switch your BeBook on, the main bookshelf page is displayed with up to eight titles shown.
2. Press Next> or <Previous buttons to display the next bookshelf page.
3. Press a key 1-8 to select the title you want.
The first page is displayed.

Page turning

1. When a page of text is displayed, press Next> or 0 to turn to the next page or <Previous or 9 to go back.
2. Press and hold the button to skip 10 pages forward or back.



First/Last page

Go straight to the first or last page of a book.

- 1.** When a text page of a book is displayed, press OK to open the menu.
- 2.** Press 1 to display the first page, or 2 to display last page.

Note

First/Last page and Page Jump are book features only and do not apply to images.

Jump to a page

Go straight to a specific page number.

- 1.** When a text page is displayed, press OK to open the menu, then press 3 to enter into the jump page function.
- 2.** Use the 0-9 keys to open the page number you want and press OK.

If you press the wrong number key, press Exit to delete the last digit.

If no page number is entered, press Exit to quit.

Zoom in and out

Make the print bigger or smaller. There are three levels: Normal, Full screen, Double. In Double mode, the text will be displayed in a landscape format.

- 1.** When a text page is displayed, press 8 repeatedly to zoom in or out to the format you prefer.

Bookmarks

You can bookmark up to five pages.

Add a bookmark

1. When the page you want to bookmark is displayed, press a key 1-5 to set the bookmark. If the key is already being used as a bookmark, press and hold the key to reset the bookmark to the current page.

Bookmark display:



The current page without bookmark



The current page with bookmark



The numbers 1-5 which have been set as bookmarks, are displayed in the status bar at the bottom of the screen.

Replace a bookmark

1. If the number you want to use as a bookmark is already being used, simply press and hold the key to reset it for the current page.

Delete a bookmark

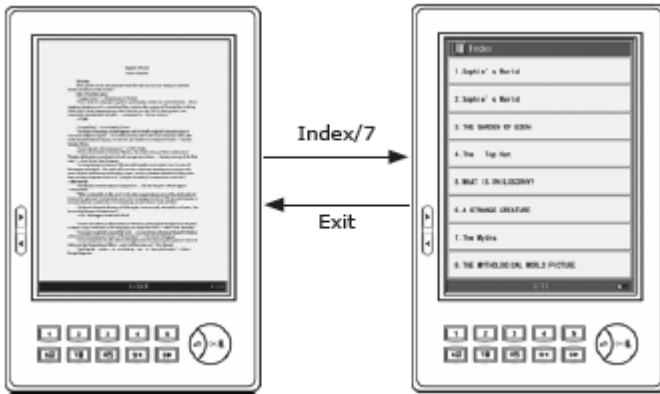
1. At the bookmarked page, press the bookmark number key to clear the bookmark.

View and go to bookmarks

1. When a page of text is displayed, press and hold 6 to display a list of all the bookmarks you have set.

2. Press the number of the bookmark you want. The screen displays the bookmarked page.

Index



- 1.** When a page of text is displayed, press Index/7 key to display the index screen.
- 2.** Press a key 1-8 to select from the index options displayed. If required, select from the next index option screen.
- 3.** At the final screen press the number key to go to the chapter you want.
- 4.** Press Exit to return to the previous screen.

Note

The index is not available for images or documents in txt and html formats.

Search

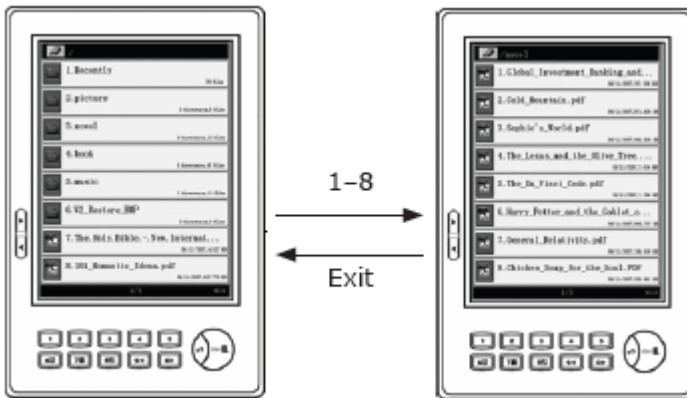
Search for a book

1. When the bookshelf page is displayed, up to eight titles are shown. Press Next> or <Previous buttons to display the next bookshelf page.
2. Press and hold the Next> or <Previous buttons to skip 10 pages forward or back.
3. To select a title from the bookshelf page, press a key 1-8.

Search by folder category

You can save books of the same kind in the same folder.

1. Press a number key 1-8 to enter a sub-folder.



2. Press a key 1-8 to open the book or document you want.

Search by order

1. When the bookshelf page is displayed, press OK to display the menu.

2. Press:

2 to search by name alphabetically

3 to search by the date you added the ebook or document

4 to search by document type.

Press Exit to return to the previous screen.

Find a recently viewed ebook or document

The books most recently opened will be saved in the "Recently" folder.

1. When the main bookshelf page is displayed, press 1 to open the Recently folder.

2. Press a key 1-8 for the ebook or document you want. Or press Next> or to display the next most recently read books.

Switch between your BeBook and SD card bookshelves

1. When the main bookshelf page is displayed, press OK to open the menu.

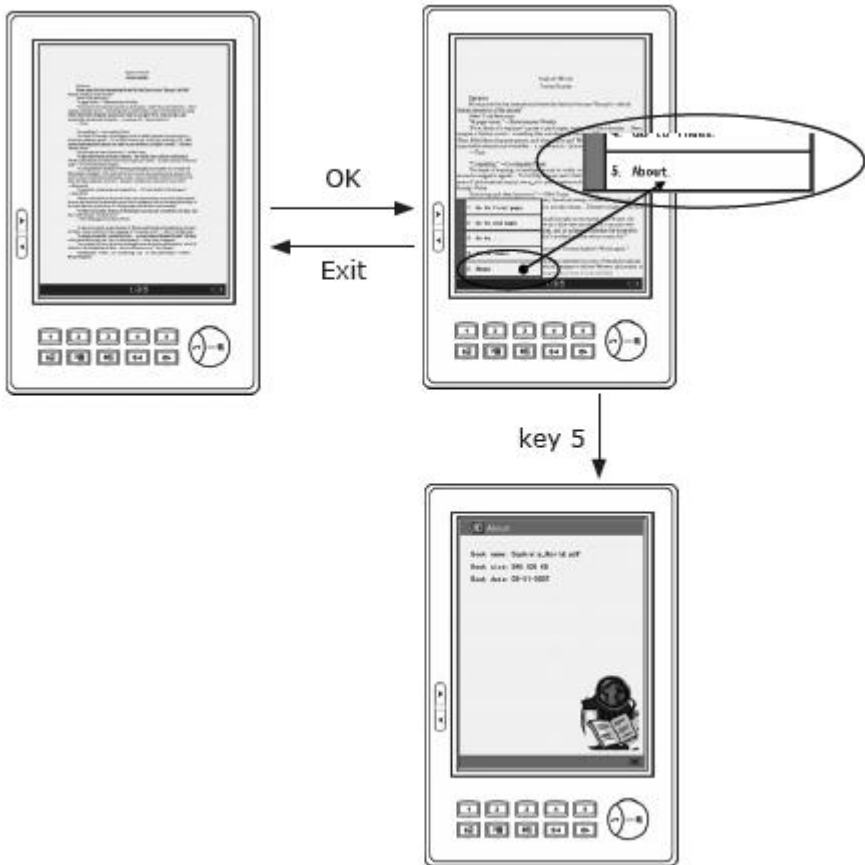
2. Press 5 to swap between the bookshelf of an inserted SD card your BeBook bookshelf.

3. Press Exit to return to the previous screen.

Delete eBooks and documents

- 1.** Switch on your BeBook
- 2.** Plug the USB cable into your BeBook and your computer
- 3.** Press OK.
- 4.** Open the BeBook internal memory (in "My Computer") or the SD card memory
- 5.** Press delete on your computer.
- 6.** Remove the USB cable from the BeBook

eBook information



1. When a page of text is displayed, press OK to display the menu then press 5 to select About.
2. All available information about the book you are reading is displayed. This can include the ISBN number, author, file name publisher, publication date, copyright and price. Different books may supply different information.
3. Press exit to return to the previous screen.

MP3 tracks

Play music or audio books.

1. When the main bookshelf screen is displayed, press the number key to play your MP3 files.
2. Press OK to display the MP3 menu, and then press 1, the Music Play function will display all information of the current MP3, including song title, bitrate and playing time.

MP3 controls

Rewind

Volume down

Previous track

Fast forward

Volume up

Next track

Sound effects

Cycle

Stop

Back to bookshelf



Play/Pause

Settings

Display the settings menu

You can adjust key tones, language, font and information settings.

1. When the bookshelf screen is displayed, press OK to open the menu. Press 6 to display the system setting screen. You can now adjust the following:

Key tones on/off

When you press a key on the keypad, you hear a beep. You can switch this off or on.

1. When the Settings menu is displayed, press 1 to switch key pad tones off or on.

Change language

You can change the display language to: Chinese, English, Russian, Ukrainian, Spanish, Turkish, French, German, Greek, Estonian, Hungarian, Japanese, Korean, Dutch, Polish, Slovenian, Bulgarian, Catalan.

1. When the Settings menu is displayed, press 2 to display the language options.

2. Press the number you want to select from the options displayed.

Change font

Select the typeface you prefer.

1. When the Settings menu is displayed, press 3 to display the font options.

2. Press the number you want to select from the options displayed.

Note

To be able to change fonts, you need an SD Card and create a folder on it named 'fonts'. You can save any (Windows or Mac) TTF files (True Type Fonts) in this fonts folder of the root index of your SD card.

System version

1. When the Settings menu is displayed, press 4 to display the your BeBook's software version information.

Help

If you have a problem with your BeBook, first try these solutions.

Switch your BeBook off then on again.

1. Press and hold Power On/Off button for three seconds to switch your BeBook off. Press again to switch it back on.

Reset your BeBook

1. Press the reset button or press and hold the Power On/Off button for at least 10 seconds.

2. Find solutions online at: **www.mybebook.com/forum**

Safety information

For safe and efficient use of the product, please follow the instructions in this guide.

Do not leave the product in direct sunlight for long periods and do not use in extreme high or low temperature environments. This can cause damage to the product and may damage electronic components and/or the battery.

Do not put or use BeBook in areas of high humidity. Avoid any liquid getting into the product as this can damage the internal electronic circuit.

Always place the product on a stable surface. Violently shaking or dropping the product will cause damage to the product and its electronic components.

Do not press on the screen or put heavy weights on it.

Do not expose your product to dust or dirt or chemically hazardous conditions.

Do not put the product near magnetic fields.

Please use the authorised accessories, do not use third party components or third party accessories.

Do not attempt to repair or take the product apart. This will void your warranty. Only qualified personnel from ICIDU B.V. or an authorised maintenance centre can repair the product.



Battery:

Do not use the rechargeable battery if it is damaged in any way.

If battery leaks liquid, please clean the BeBook and replace with a new battery.

If liquid leaked from the battery contacts human skin, please carefully rinse and consult a doctor.

Please properly dispose of old and waste batteries.

Cleaning

Do not use chemical solvent to clean the surface of the product. Please use a soft cloth to wipe off the dust from the surface of the screen or cover.

Product disposal instructions

Products that include the WEEE [The Waste of Electrical and Electronic Equipment] symbol, shown below, should not be placed in the normal household rubbish, but should be disposed of using the appropriate WEEE disposal facility. These facilities may be advised to you by your local council or the retailer from which the product(s) was purchased.

Warranty

If you think you need to return your BeBook for service or malfunction, please visit <http://www.mybebook.com/support> for detailed instructions.



Your BeBook is guaranteed for a period of 12 months from the date of purchase.

A Broken screen is not included within our standard warranty policy.

For full terms and conditions of our Limited Warranty Service

Please visit www.mybebook.com

http://mybebook.com/a9/Terms-&-Conditions/article_info.html

This product is  and  approved.

Frequently Asked Questions

Q: My BeBook won't turn on or freezes at the same page.

When this happens, the last screen content of the BeBook will remain displayed.

A: Most common cause: the battery is flat.

Solution:

- Connect the USB (power) cable to your BeBook.
- Press the small reset button on the back and/or press the on/off button on top of the device.
- Charge the battery for up to four hours.

Q: I tried to update the software/firmware, now my BeBook freezes at the same page.

Or, during the update nothings happens for at least 10 minutes.

Or, I get a message stating: "invalidate file"

A: Most common cause: the battery went flat during the update, or there was a problem with the SD card.

Solution:

- Check if the SD card used is smaller than 256Mb (a 128 Mb SD card probably won't work) and no higher than 1Gb (not all Gb cards, 2Gb and larger can perform the update).
- Use a suitable SD card, preferably a 1 GB card can be used to store books after the update.
- Connect the USB (power) cable to your BeBook. Press the small reset button on the back and/or press the on/off button on top of the device. (Keep the USB cable connected)
- To restart the update: Hold the volume + (V+) at the side of the BeBook and press the power on/off button twice, to shut down and power on again. Keep the V+ button pressed during this step.

– Once the update progress bar is shown, wait for the update to finish, it will ask you to press a button when the update is finished. (There is no need to keep the V+ button pressed during the update).

– If this still fails: check the downloaded update for the correct file size. Instructions can be found here: <http://mybebook.com/p9/FREE-BEBOOK-SOFTWARE-UPDATE/pages.html>

– Download the update again and check its file size, if it's correct and the update won't start, your SD card is not compatible, please try a different make or size of card.

Q: The BeBook shows 2 battery bars but the page will not turn

A: This happens sometimes when turning a page if the battery has run down. The BeBook gives an electronic pulse to bring up the new page, but as there's no (or very little) power consumption while reading a page, the battery may run empty and the last page is still displayed including the old power status.

Solution:

- Charge the battery.

Q: Why does it take longer to turn a page in a LIT file than with other files?

A: This is a problem with the LIT file and we are working on an update to solve this problem.

It will appear on our website soon.

We are very sorry for the inconvenience in the meantime.

Q: I purchased and/or downloaded an ebook from an online bookstore, now the file won't open, or the file doesn't show up on the BeBook.

A: Most common cause(s):

Solution:

– The downloaded/purchased file has DRM (copyright protection) system, not supported by BeBook.

– The downloaded/purchased files has a format which isn't supported.

Make sure the BeBook has the latest update from our website **www.mybebook.com**. If the downloaded book still doesn't show up in your booklist, the format isn't supported and cannot be read.

Current formats are: pdf, doc, html, bmp, jpg, png, gif, tif, djvu, fb2, wol, txt, epub, ppt, lit, chm, rar, zip, mp3, mobi, prc, htm

If it does show up on your book list it's most likely protected through a 3rd party DRM/copy protection system. Though the extension (e.g. .pdf or .lit) remains the same, copyright protection has been added.

The BeBook can only read DRM protected books in the ePub format. It's not possible to read other protected books. Make sure to choose the correct format when downloading books. If you accidentally downloaded a non compatible version, please contact the vendor and ask for a replacement in the correct format.

Q: Where do I get new books, how do I put new books on my BeBook?

A: Books can be obtained from a large number of websites.

On **www.mybebook.com** you will find over 20,000 free books to download. More current titles can be bought though many stores.

Make sure you download your books in the correct file format. The files should not contain a DRM (digital rights management) system. There is one exception: you can download protected books in the ePub format.

There are a huge number of online stores offering these books.

To put the books on your BeBook, attach the USB cable to PC and BeBook and press OK to connect. (If it doesn't connect, restart your computer and try again)

Your BeBook is now recognised as an extra storage device on your computer. Just drag and drop the book files there.

ePub Books purchased can be uploaded through the Adobe Digital Editions software.

Q: Which formats are supported on the BeBook?

A: BeBook supports many formats: mobi, pdf, ppt, doc, lit, html, chm, bmp, rar, jpg, zip, png, mp3, gif, rtf, tif, wol, fb2, djvu, txt, epub.

Q: What is DjVu?

A: DjVu is a digital document format which allows for the distribution of very high resolution images of scanned documents, digital documents and photographs on Internet and on DVD. For more information visit:

<http://djvu.org/>

Q: BeBook can not read .odt format, do you intend to implement this format in BeBook, if yes when?

A: odt is not supported, but you can save your document as .doc file which works perfectly on BeBook.

Q: What is odt?

A: odt stands for "open document text". This format is a part of odf (open document format) standard introduced by ISO and used by StarOffice, Koffice and other applications.

The OpenOffice is like Microsoft office and runs on Linux environment. It's available for Windows and MacOS as well.

Q: Will the BeBook support pdb format in the future?

A: Currently we are developing this. Meanwhile, you can convert pdb files to the pdf format and read them on your BeBook. Details on how to do this are online at:

http://www.imageconverterplus.com/help-center/work-with-icp/examples/how-to-convert/pdb_pdf.html

Q: Which languages are supported on the BeBook?

A: The BeBook menu can be changed into the following languages: Chinese, English, Russian, Ukrainian, Spanish, Turkish, French, German, Greek, Estonian, Hungarian, Japanese, Korean, Dutch, Polish, Slovenian, Bulgarian, Catalan.

Q: Can the BeBook read Chinese?

A: Yes, the BeBook can read Chinese characters.

Q: Can the BeBook read Russian?

A: Yes, the BeBook can read Russian language.

Q: Can the BeBook read Hebrew?

A: Yes, no problem.

Q: Can the BeBook read Arabic?

A: Yes, no problem.

Q: Can the BeBook read other alphabet/characters?

A: The BeBook can read any language, and any character as long as it's "true type".

Q: Does BeBook have translation function?

A: The BeBook can read many fonts but it doesn't contain translation function.

Q: Does the BeBook have a search function?

A: At the moment, you cannot search for words on the BeBook. This will be a feature in the future.

Q: Does the BeBook have touch screen?

A: Currently the BeBook screen is not touch screen. This will be a feature in the future.

Q: Does the BeBook have wifi connection?

A: At the moment you cannot download files wirelessly, only via USB cable. We are currently developing wifi and RSS feeds. We expect this generation BeBook to be available early 2009. Please note that this will be a new piece of equipment and the current BeBook cannot be updated or upgraded to wifi.

Q: Can I optimise my pdf files for the BeBook?

A: To enjoy the best reading experience with BeBook, we offer you a free

tool to optimise your books and documents. It's really easy and you can download the software at:

<http://cutepdf.com/download/CuteWriter.exe>

To optimise content, books, documents for BeBook please follow these steps:

1. Download and install CutePDF from the link above
2. After the installation is finished: open the document
3. Change the page size from A4 (or letter) to: 3,54 x 4,72 inches (90 x 120 mm)
4. Click Print button and choose a new printer called 'CutePDF Writer'
5. Click Printer settings, then 'Advanced' and then change page size to Custom page size
6. Now set the page size to 3,54 x 4,72 inches (or 90 x 120 mm) and click OK three times
7. Now click Print and save the pdf file

After copying the pdf file(s) to the memory of your BeBook (either internal or an SD card) you will see it looks perfect.

Q: The size of my screen is too small to see my pdf document. What is the problem?

A: The document isn't optimised for the smaller BeBook screen (compared to a PC).

Try the zoom function by pressing 8. Or you can use a free software tool to optimise your books and documents. It's really easy and you can download the software here:

<http://cutepdf.com/download/CuteWriter.exe>

To optimise content, books, documents for BeBook please follow these steps:

1. Download and install CutePDF from the link given above

2. After the installation is finished: open the document
3. Change the page size from A4 (or letter) to: 3,54 x 4,72 inches (90 x 120 mm)
4. Click 'Print' button and choose a new printer called 'CutePDF Writer'
5. Click Printer settings, then Advanced and then change page size to Custom page size
6. Now set the page size to 3,54 x 4,72 inches (or 90 x 120 mm) and click OK three times
7. Now click Print and save the pdf file

After copying the pdf file(s) to the memory of your BeBook (either internal or an SD card) you will see it looks perfect.

Q: How does the BeBook display pdf files? Is it able to pan and zoom?

A: BeBook can read any pdf, and you can zoom the page. We use our own pdf parser software for this. The best option is to use optimised page settings for BeBook, which is 3,54 x 4,72 inches with margins set to 0,012 inch.

Q: What are the optimised page settings for BeBook?

A: Optimised settings for the BeBook are: 3,54 x 4,72 inches with margins set to 0,012 inch.

Q: What is the screen resolution of the BeBook?

A: The screen resolution is 600 x 800.

Q: When rendering pdf files, will it correctly show layout, graphics, embedded fonts, etc.?

A: Yes, BeBook can open any pdf (and many more document formats), and it displays graphics, technical drawings etc. perfectly. Please note that the page layout size should be set to 3,54 x 4,72 inches, which is optimised for BeBook.

Q: I have downloaded .lit files. It shows that the files have been stored in the BeBook internal memory when it's connected to the computer, however when you unplug the USB cable to view or read the .lit ebooks they do not appear in the BeBook. What is the problem?

A: Have you downloaded the new update for the BeBook website? You can find it on our homepage, in the News section.

Some .lit files are DRM protected. DRM stands for Digital Rights Management, a copyright protection system. BeBook doesn't support DRM at this moment, at least not for .lit files.

Q: Can I install Microsoft reader on my BeBook?

A: You do not need to install Microsoft reader. BeBook can already read .lit files, but only files without DRM protection.

Q: Can the BeBook read books purchased on Amazon or Sony e-book sites?

A: No it can't. Both Sony and Amazon chose to use their own standard, so book sales will end up with them. There's no reader that can read all formats. However, BeBook does support the widely available ePub format.

Q: Where can I download free ebooks that I can read on my BeBook?

A: There are many websites where you can download free ebooks. A few examples are:

<http://www.lifeinbook.com/>

<http://www.freebookspot.com/>

<http://www.hongkiat.com/blog/20-best-websites-to-download-free-e-books/>

Most classic titles are free because they are free of copyright protection. On our website, you can find 20,000 free titles:

http://mybebook.com/download_free_ebook/

Q: I have downloaded an ebook, but it won't open on the BeBook. What is the problem?

A: As you can read on our website, most formats are suitable for the BeBook. The most common cause of this problem is that most commercial ebooks are DRM protected (Digital Rights Management, a copyright protection system).

Q: What is DRM?

A: DRM stands for Digital Rights Management, a copyright protection system for digital documents. Providers of digital text have their own systems to protect content. For example, Adobe (pdf), Microsoft (.lit), Sony and Mobipocket all have their own protection system. BeBook now supports DRM protected ePub files, so .epub books with DRM.

Q: How much do ebooks cost?

A: Most ebooks are 25% cheaper than the printed version.

Q: How do I download an ebook on my BeBook?

A: Follow these steps:

1. When the BeBook is charged, switch it on by the ON button on the top side of the BeBook
2. Insert the USB cable into the BeBook (at the bottom) and your computer
3. Press the OK button to connect
4. Download ebooks (for example the 20.000 free ebooks on our website. Or from other websites. But, keep in mind: only DRM free books. DRM stands for Digital Rights Management, a copyright protection system that does not allow you to open the purchased books.)
5. Save the books on the BeBook (internal memory, or insert an SD card in the SD slot on the top side)
6. Remove the USB cable from the BeBook

Q: How do I delete files from my BeBook?

A: It's not possible to directly delete books from your BeBook without connecting it to a PC.

To delete books, follow these steps:

1. When the BeBook is charged, switch it on by the ON button on the top side of the BeBook
2. Insert the USB cable into the BeBook (at the bottom) and your computer
3. Press the OK button to connect
4. Open the BeBook internal memory (in "My Computer") or the SD card memory
5. Press "delete" on your computer
6. The file is now being deleted
7. Remove the USB cable from the BeBook

Q: How do I charge my BeBook?

A: When you plug in the USB if the BeBook is turned off, it will charge.

When you plug in the USB if the BeBook is on, it will say "To connect press OK. If you press ok, it will connect. If you press any other button, it will automatically charge the battery. The battery will be fully charged in 4 hours.

Q: How do I connect my BeBook to the computer to charge or to download ebooks?

A: If you insert the USB cable into the BeBook (at the bottom of the BeBook, remove the rubber lid) and into your computer (in an USB port), the BeBook will give you the option to press OK to connect (the big OK button), or to press any other button to start charging the battery.

Q: Can I downgrade the BeBook?

A: Yes, you can downgrade your BeBook. Please visit our website for more instructions.

Q: Is the BeBook for sale in stores?

A: Yes! Please check our website to find a list of retailers near you. You can also buy a BeBook on our website www.mybebook.com.

Q: What is the average amount of time it takes to turn a page on the BeBook?

A: 'Turning' a page, or refreshing a page takes 1-2 seconds. The larger the size of the document, the (slightly) slower it will go.

Q: Does BeBook play audio books?

A: Yes, the BeBook also plays audio books. You can download many audio books online, for free or paid, especially in English.

Q: Will the BeBook play audio books out loud?

A: No, the BeBook does not have speakers. You can listen to audio books by inserting the earphones into the earphone-jack. The earphones are included in the BeBook packaging.

Q: Can I read an ebook and listen to mp3 at the same time?

A: Yes, you can. Just play an mp3 file first and then use the exit button to go to the main bookshelve to select a book.

Note

Do not forget to stop the mp3 file(s) from playing otherwise your battery will run flat after a few hours.

Q: How do I turn up the volume of audio books?

A: By using the two silver-colored volume buttons at the right side of the BeBook.

Q: Which accessories are available for the BeBook?

A: Various accessories for the BeBook are being developed: cases, limited edition cases, lights etc. Check out our website regularly to see when they are available.

Q: How do I use the memory of an SD card?

A: Please go through the following steps:

1. Insert the SD card into the slot on the top of the BeBook.
(SD cards no larger than 4 Gb)
2. Connect the BeBook to your computer with the USB cable, then press the OK button to connect.
3. Your computer will now recognise the BeBook (internal memory) and another drive: the SD card.
4. You can now open the SD card drive and save/delete files.

Q: Is the SD slot SDHC compatible?

A: No, not yet. But BeBook also has 512mb internal memory. SD is supported up to 4 GB.

Q: Which SD cards can I use?

A: We guarantee that the BeBook will read books on the memory of SD cards up to 4 Gb.

Q: How do I switch between the BeBook internal memory and the SD memory?

A: When switching your BeBook on with an SD card present, the catalogue will display the contents of the SD card.

However, simply removing the SD card will automatically switch the device into the built-in storage mode.

Q: How do I use the bookmark function?

A: When the page you want to bookmark is displayed, press 1-5 to set the bookmark. If the key is already being used as a bookmark, press and hold the key to reset the bookmark to the current page.

Replace a bookmark

1. If the number you want to use as a bookmark is already being used, simply press and hold the key to reset it for the current page.

Delete a bookmark

1. At the bookmarked page, press the bookmark number key to clear the bookmark.

View and go to bookmarks

1. When a page of text is displayed, press and hold 6 to display a list of all the bookmarks you have set.

2. Press the number of the bookmark you want. The screen displays the bookmarked page.

Q: Is the BeBook compatible with Vista, Mac etc?

A: The BeBook uses a regular USB connection, which is a universal standard. This is compatible with all MS Windows versions, including Vista and Mac.

Q: Is the BeBook useable for visually impaired people?

A: Our BeBook has a 3 level, single key, zoom function. This means you can double the original font size twice. When fully zoomed, font size is large enough for most visually impaired.

Q: How does the zoom function of the BeBook work?

A: Our BeBook has a 3 level, single key, zoom function. This means you can double the original font size twice. Simply press 8 to zoom in.

Q: What is the text /background colour combination?

A: The BeBook uses black text on a white background, just like regular books. It's currently not possible to change this.

Q: Does the BeBook have a colour screen?

A: No, the BeBook uses eInk technology, which means that the 'ink' is black and the 'paper' white-grey just like a normal book. Colour display is not currently available.

Q: How are images and pictures displayed on the BeBook?

A: The BeBook has a three-level grey scale, this means that the pictures will be displayed in black-grey-white. It is clearly visible, just like an old fashioned black and white picture. Contrast and sharpness cannot be adjusted.

Q: With which USB port does the BeBook work?

A: The BeBook has USB 1.1, which also works on your USB 2.0 connection.

Q: How do I transfer information to the BeBook?

A: You do not need a software package. Please go through the following steps:

1. You can plug the BeBook to your PC or Mac with a USB cable, your computer will just simply show a storage device icon on the screen just like other USB memory stick.
(the USB cable is supplied)
2. Copy all the files you want to read and paste into the BeBook storage device icon.
3. When you plug off the BeBook from your computer, then the BeBook will automatic recognize the file you just paste in and you can start to enjoy your reading on the BeBook:)

Q: What is the warranty policy for the BeBook?

A: We offer one year full warranty if the BeBook has a malfunction.

www.mybebook.com